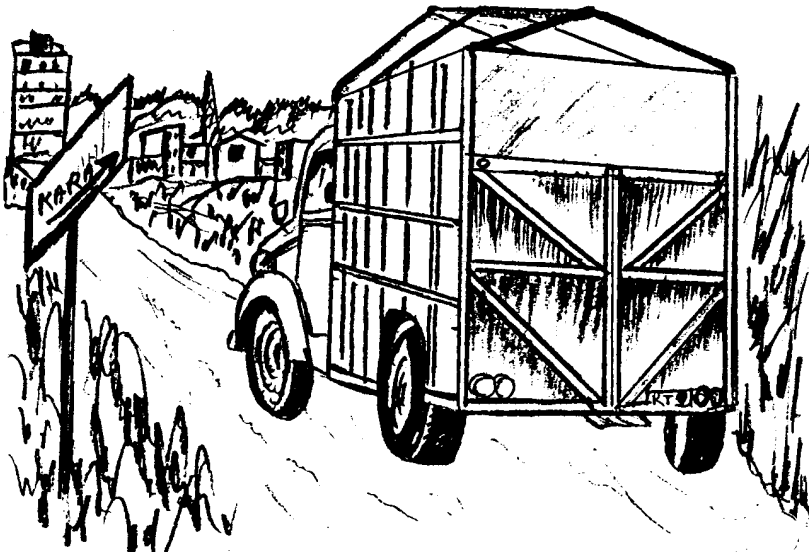


Saan ninbina gbenᅇ i, I yen g nyuan



Yenliid Taatuub San-Baatiid

Duud cind g saa Lumi

Saan ninbina gbenn̄ i, l̄ yen g nyuan

Duud cind g saa Lumi

(Les yeux de l'étranger sont grand ouverts, mais il ne voit pas : La première visite de Douiti à Lomé)

Récit en langue moba (ben) par
YENLIDE Tatouba Jean-Baptiste

ATAPEB

(Association des Traducteurs et Alphabétiseurs pour la
Promotion des Ecritures en Ben)

Dapaong, 2003

Illustrations: DIMONYENGOU Kankpénandja

Publié par la SIL Dapaong:

1ère édition 1er tirage 1991:2 (500 exemplaires)

2ème édition 1er tirage 1997:2 (500 exemplaires)

3ème édition 1er tirage 2003:4 (500 exemplaires)

Duud tien naasenm cegli youg nba k b mali k ban yaad g ɲaa b danm. Jua nne won kal Nyanpua diciɛg n, g gbiɛ g naasenm kal g pag yen lieb b binbenu po. Yenm tua k banm kua kalaatu g tan g la tuonn dog ne, k b bu yaad i, g daan la tuonn. G lieb maad g kpaab yaa tuonn mɔg fala, k b mɔ bu yaad i. Lieb mɔ, k a gii legn dog ne, a bu fid gii tie baa kaya-kaya gii laad a kuug kuug g di. G jua ɲann kal g tu tan pag pag yul g nyaan laa u kukua. G tan gbal g jiin'm:

« N dɔnn-nba, sua kul g ban wan bu tɔgn tɔgn nand g ciel faa! Bonyenn n yen be g tie mɔni l kul po. Lann n tie k lan paa nand dog ne nyan, l biɛ l paa nnyan i siel po mɔ.»

G naasenm kul ji fid ninbina g nyuan'o, k u maad'b : «L gii tie k i bua, n bo bu dugn'i jel min bo gad Lumi k l tien nand.» Naasenm, k b bua. B kul n ji nyiel g nagn'o.



Wan bual’b, k b ban’o oo? Naasenm, k b g ban’o. Wan ji cil gii dugd : «N sann n nyan Duud. N kua Kpaajenda i, g tie kpakuol. N g kua kalaatu. N biε g ban g pend Daapaawɔŋ ne g gad fagm. Lieb saa Kumaad g leb g kpend, min nuan saa saa g tan ciend i, n g ban baa Maawɔŋ ne mɔno. L po n te g dinne, min daan la dii yen tiina nyan, k n kuad g la ligli, g ji mali k l bo baa ŋan yen min mɔ ń bann Lumi. N tu gbiε g kpinkpenda tua g Lumi ! Lumi ! K b biε ji Lumi.

Lann i, k n mɔ ji fiil k n mɔ bu bann l Lumi dinne. L gii tie k n fid g gad, n daan bu kuad kpaani g la ligli. N gbiε k b biε tua g kpaani mɔg daawɔ Lumi nɔwel dana n ninɔ. Min bu gad yaa daal, l sua k n won tuod g suol kpaani piintaa, g luon kuosɔnd n ninɔ o. N daan bo bu yeg yen t dog po jua nne i, k u tie kpankpankpendl. U yen daan bua tonm g sua k n daa g gaal n tiina ligli, k u gaal liig, k n ji yuand g ŋuan.

Min bu gad yaa daal siŋaawɔ n, k n tuod g fil, g lol n tied ŋadiug n. B tien jied, n mɔ fid g dii yaa aa? Min te bid ń cien’n sanjal po, min tan la Janbenn daag lol g tob’o wan juab’n ne yen Daapaawɔŋ. N pund Daapaawɔŋ yensikpikpalg n i, k n yiε nne b yi’ug Laal, k u suun dogda ŋaag, k u cien’n k t duo jual g daan pund lola yaal buol.



K u gad g duand debig nne ninḡ, g maad maad yab be l ninḡ bonpienm n. N mɔ gbɛ yaa aa? N tan sua k u muub kadapienḡ nne i, g gɔ. G maad'n k n bu pa kobiinluob yen piinmu i l po. Min ḡund l ligli g te'og wan gad g pa'b g yuand g guan o, g tug'n g kua yen'n lol n ninḡ, g ḡɔn'n n kinkaanu g mubn'n n tigd. Min ji nyind gii kal l ninḡ. Min ji ban g lol bua n fiil n nyan. N yɛ́ n tan maad'n k n ji daa kan jiid o, g sua g youg pund ii? Min kɔdb kɔdb g sond g cii tinḡ n, min yen n yɛ́ n ji kal gii pag. Min tan bual'o, mii lol ne bu l fiil dinne nuan i, g niib g baad ii? N yɛ́, k n tien suoo, k lan yann k n diid. Min nuan sun k n ji be Lumi i.

Daajuoug n ji tan nagn, n sua niib ji nya daag n g cud, g daan ye lol pib, b gbie. Yab bo kal dieog n ning g tien tigd-nba nyan n ji nya, g baal t buol g te naasenm banle nne n don t tied lol po. L youg, ban ji cil gii yi sana tuagu tuagu, k t kua yend yend g daan gbenn, ban luon gana. Tinm ji ban k t bu fiil yaa.

Jaa dɔlb daa g baal. K t ji daa nyind g guu'ug. K l wai ! Ban tan gbal g sun big wan tuog'o. Dɔlb nuan tan baal g sua k l bɔnn o. Jaa u bua nyieɔg sonml i. Tin yaan l fiil g sud waam nne, k u gaal sand i. Min la g Dɔlb nund guol kua i, g nman g njanm g kal g juu canyiin, tiidi kua n ji tie lilb-lilb !



T saa saa g daan pund dobignne ning, k b tua k t ji pund Maɔnɔn n nyan. Dɔlb n bie daa pɔn siel buol g sed lan wai. T tan sua k u gɔ yen puob banle nne, k b

bu jiid «Takpaami», bii ɛ ? Sua kul g bua g nil yabn'ò. Dɔlb diid g tan sua k n yaa nunɲ po n g fan, wan niin g kaan yend n buol k u kub big. Yiɛl biɛ be ɛ ? K n ji muab. Puo ne n te k n ji saag. N kan fid g tand n titala mono.



Tin gii saa saa g daan pund yenn buol nne dɔlb ɲ jiid g gad sijenm buol g maad maad. Tinn tan sua k u gɔ yen kadabig i, g ji gii som bal bal bal nne. Min tan gbeg g bual n lua, lol ne baa som suo suo nne tin tan pund bɛ youg u? Jaa nil ne g ɲanm g gbiɛ muaba, wan gaal jad g ji gii fu fu yen'n muaba kaad n ninɲ, g tan taa fuonn. L youg, min suon silb !

T ji l som suo suo nnyan i, min tan gbal g guan.

N tan jie g nyuand yaa youg binniinu n suol'n. Dɔlb kan tuo g sed n yaa kua po. Nyunnyuglu n nyan. Sua biε g kub nyum lol n. Puo nba bo gaal n yiεl n kub u big nyum waam nne. Min yaan ηɔn nuu n mɔb po, k n bu nyu uu? Wan ji cil gii sugd'n aɟuna n. Min mɔ, k n bo gii ban n bo kan miel'o, n biε bo kan tuo wan kal n buol.

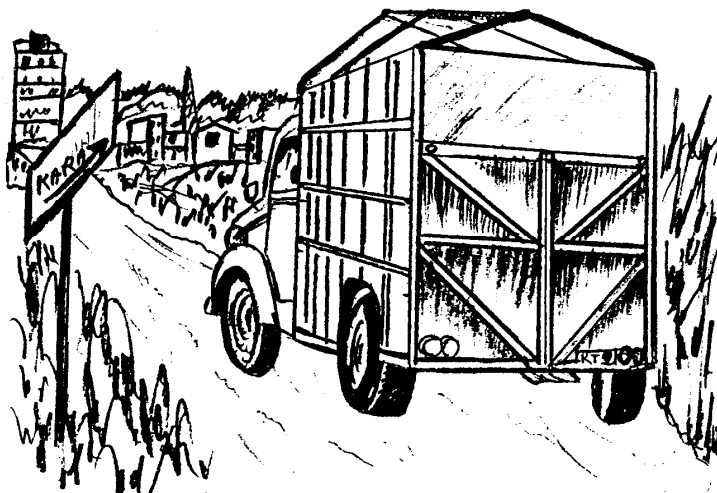
T ji l saa saa g daan tenn waam yen tin kua Lama-kara i, sijenm n sen t yaa lol, k l ji tie yɔgsiiug i. Jaa t bo juab lol nba g tie Togo lol. U bo nyiε siel po i, g baal Daapaawɔnɔ, g ji g bua k u jiid Lumi fam. Sijenm, k tin jiid t kul. G biε jiin tied mɔ g lod, g fiid l kul. G yie g lol kan pend, g dɔlb n ηmien sua kul u lokuadi. K n mɔ ban g dɔlb ηmiend ligli yaa aa? Yenm n gaal gaal b ligli g kua dog n, g daan kpaan lol g yaad. Bε n bu taan'n mɔ, min tug n kuosɔnd kul i?

Min ji nyind sijenm buol saa saa yend n tan baal g sed n buol, g sua k n ji gɔ i. Wan tab g fiin'n, g bual'n k n nyiε lε i? Mii Daapaawɔnɔ. K n tie bε buolu i? Mii muaba Kpaajenda. K n saa lε i, min nikpel ne i? Mii Lumi. Jaa muaba big i, k u jiid'n. L youg, wan ji cil g laa yen'n, g maad yen'n muaba n ninɔ. N yam n taan. G sua k u bo kub kpanu g ηman, wan jend g te'n.



Wan ji kal tin gii pag, k u bual'n Daapaawng laabaal po. G tan maad'n k wano nyie Naaniεg i. Wan ji la lociεwng nne g sen'o, g te dɔlb n juab'n yen n kuosɔnd kul, g tien l ninj. G nyaan maad dɔlb k wan mɔnd g daan la lol Sɔgdε g te'n, k n tie u baawaal i.

A la tin tan pund Sɔgdε ii? Tin tuog sijenm. Ban sen'ti, g bual dɔlb wan tug yal. Dɔlb, k u g tug siel. Sijeyend n tab g do, g sua n daan dua lol n, g go. Min ji gbie k b pabn dɔlb i, g tua : «Amene Paspual! Bɔksinasiewng! Kadantig!» Mii dog mɔnn n nyan! Ban te wan jiin'n. Ban bual'n k n kadantig be le? Mii n g mɔg. Ban guan g tɔb lol nne, g te wan lebd yen'n Lama-kara.



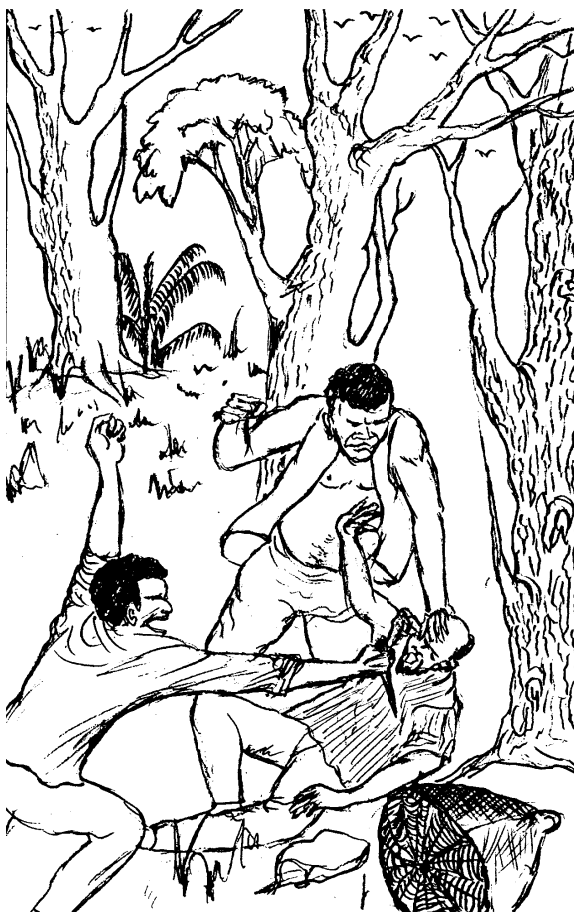
N ninja sije ɲann sie sie, g biɛ tan sua n go i. Lan lid'o. Wan biɛ guan g tɔb loliel g biɛ kuan'n g nyaan ji dien kadabig nne g te'n, k n tu gii pund naan g sijenm yie k n kan pend, k min ɲɔn'm l kadaaɔg. K n ji kub'o ked ked ked !

T ji kub kub nnyan i, b ji g sen'ti ne yen Cefie. Jaa n sunn n kadaaɔg po, k l sag lol n. Min kpaan kpaan, n g la. To ! Sijenm n biɛ nyan! Ban jii'n. N yaan g mɔg kadantig. Ban te'n nuukula ɲanle, g guan g pii g tud'n min daan baa lol n. Dɔlb ɲ miel miel sugl, ban tan ɲaa'ti tin pend. T pund Lumi, n mɔ ban k n saa lɛ po i? Dɔlb, k min jiid. Min nyan kobiinle g te'og. Wan guan g lu n nunɲ n, g kobiinluob i kaa, kpaani nna ! Min tan gbal g te'og kpaani ntaa. Wan juab u lol g pend, g ɲaa'n k n ji sie.



Min ji l sie l buol i, n kan fid g lie. N bie g ban sua dog n. N tan sua jua nne k u baad. k n kuad kpaani yaa aa? N ji ban k n yul manɔ n nyan ? Mii «Εεν». K u bua. N ji yed k n luod kuosɔnd nne, min tuog kpankpiena kua i. Min didid'b g daan biin piig yen banluob. Bonn ne lan kpi n gbanu kul ! N ligli gbenn. N ji bu tien nle i? Jua ɔann n yed k u daa yab tenn g fo nyan nuan. Yab kpe nyan, min lu'b muasɔg n. Wan ji maad'n k min ɔaa kuosɔnd ne g ɔuan'o u ɔaapo, g daan gaal ligli, k u nyie g ɔaa u ligli ɔaag, k u bie bo g ban k u bu cend kpankuad dinne. U be lol n yo g maad. Jaa naayig i ! N mɔ ban yaa aa? Min kua lol

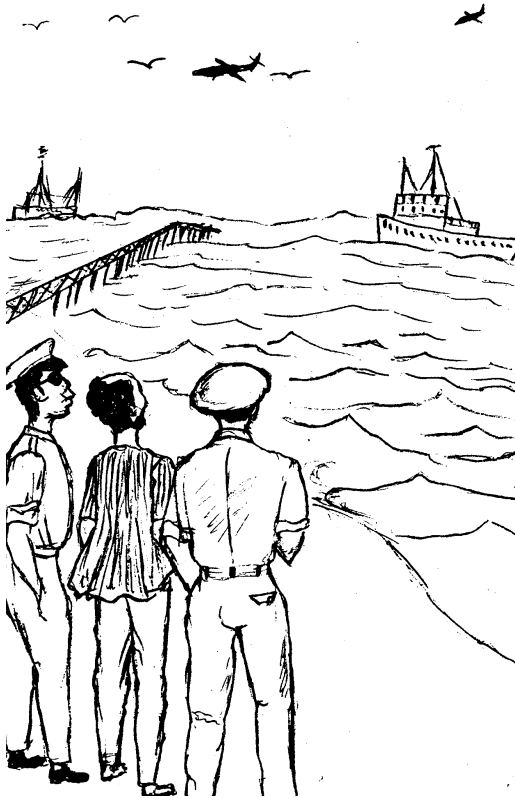
n. N la g lol ji l saa saa g daan pend dog n gii kub kub g daan kua muaog n. Min ji sua u lieb n laad gii togi'ti. N yam n pud. A la wan l sed b siign ii? K b kub lanbana yen jugi. Ban fua g nyan'n, k n bua ligli bii kuum i? Ban gul'n. K n maad tonm, «Aa !» Mii min ji l bel miel i ... Yend n fiin'n. K min lebd g san g daa gbeg.



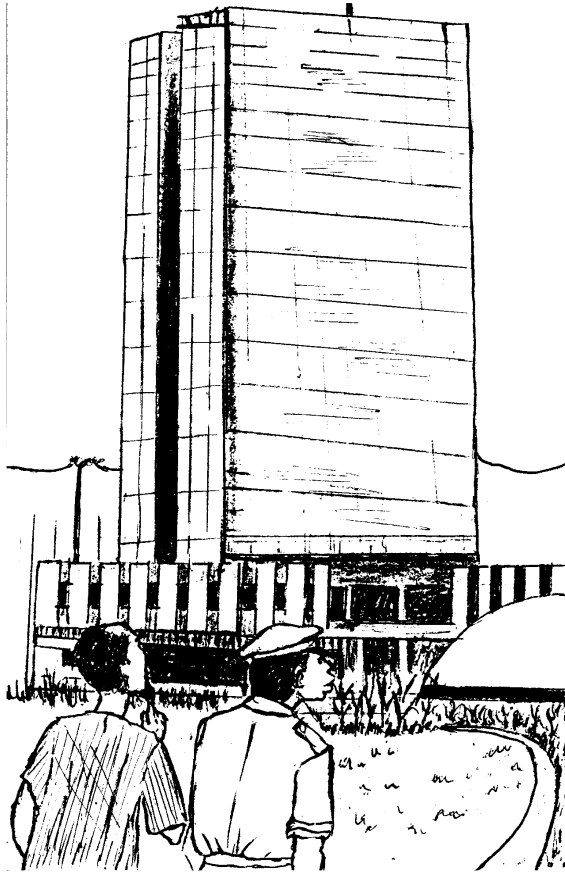
Min buan nantaal finfiunḡ n, g san san g daan jal sijenm, k b mɔ waa muacɔg n. Ban sen'n. Min maad muaba n. B g gbie. Min ḡɔn ḡɔn'm mii naayiga n suol'n. Ban juab'n tin lebd finfiunḡ n. T ji nagd l buol g sua k l naayiga yenm sie, g yenm kal g pul n kpaani. Ban yaan gbad sagnu, b diid g sua sijenm. Boo! Ban nyɔl b tied yen b lol g san. Sijeyenm n bel bel'b g daan gbal, g lebd t buol. Sijenm n juab b tied yen b lol kul, tin lebd g cend sanjacienn ne yen Lumi tug n. K n mɔ bie ban puol yen yaanḡ n be naan yaa aa? Tin tan pund sijekanḡ n, ban kua yen'n b cienm buol, g maad'b k b fiel'n naayiga nui n ninḡ i. Ban bual'n buali boncienn g te'n jied min di, nyum min wul. K n paa g nu, daa ntaa n g wul! L puol po, ban yaan bann k n tie Lumi saan, g g ban sua dog n ii? Ban te'n ligli tuda piig g don'n bonn nne po, g bign bign'n g daan gbenn. Ban ji bual'n g ḡmaa n daan cien'n Lumi i? Mii n daan baal n kua i, k n kuad n kpaani g bann dog, g fid g lebd. Ban maad'n k min daa fann g baal n kua dog ne.

L youg, ban yin muaba bid banle nne, g maad'b k ban ḡɔn'n dog. Ban juab'n yen sijenm lol. Hei! K n diin l ninḡ. Bid ḡann mɔ mɔg yam! A kan yed k b tie sijenm ! Ban daa cind, k t bu gad nyunpindu i, k min daan diid nyum.

T tan nagd mɔgl buol. Hei ! Mii ban gii leb, k n kan sed ne. Ban caan laad! Ban gbaa k min nya g gad g daan sii nyum. Min yie.



Tin pend l buol g gad defagdug nne buol. L fag g g mɔg sinsaan po ! Ban maad'n k b gaan saanm ne buol i. Mii g niib mɔ n l suun l ninŋ ii? Ban maad'n g muaba bid n yab l ninŋ! K t bu kua l ninŋ i, min daan diid. K n mɔ ji dien lol n nyan kalaaci nyan !



Tin tan l nagd l dieog dimɔb n ninŋ nne i, n sua lan luod l kua. Mii ne nuan tie yaalidug i! L youg, min gii pel pel g daan kua. Lan biɛ guan g luon l kua. Tin ji pend g gad g daan kua bebig nne n ninŋ, k l tie ninnyuandi kua. Lan guan g luon mɔnn. Mui n suol nyanyiin! Min la k l do yen'ti kua i, g daan pund lan bu sed naan g sed. Tin nya. Ban maad'n k t ji be dieog ŋann polu po i. K min baal g tibn g diid ne. Min

nyuand n daan sua g tiidi, lola, ŋaadi, k l kul cuu cuu!
Nunfufuug n̄ suol'n. Ban maad'n k t ji be piintaa yen u
died ŋanle po n nyan. Tin waa waa l ninj, g biε guan g
kua debig ŋann n ninj. Mui n̄ yaan suol. L yann waam
min sua k t biε ji sie tinj n i. Mii l g paa i po saa !

Tin guan g kua lol, k t ji bu gad «Sigaame» bii
«Sigaam» i? B dog po daag a ! Tin tan pund, min sua
bunbɔunj i bal bal, niib Kukua ! K b ne kua, k b ne
nya, g milb
g jalg liel.
Ban bual'n
k n bu daa
be i? N mɔ
biε ban yaa
aa? Mii n
bua taba
yen guol i.
K lann g be
ne waa ! K
n mali k t
be



Daapaandaag n yaa aa? L youg, ban te min maad tuda njanle n ligli po. Yend n ji suol n nuu, tin kua daag n, k n nua janm janm nyan big nyan !

Wan pond pond yen'n, tin daan do detutuadug po. L ninj, puogbenja n kal g kuad cincena g kan fid g fiil ! Wan daa cincena g te'n, tin lebd g nya cincann po. Wan bie daa kolciεonj yen liemu yen fidl g te'n. Tin ji lebd u lua buol. L youg, tin cend g kpien sanjabonn g lola milb nyan kuutuul nyan. Kaannaa kul mui ! Tin gii kub kub g daan gad Daapaaεonj lola n se naan lann Lumi tug n. Ban kua g gaal tigd g te'n. N g pa siel. Ban kuan'n lol n. Min ji tien'm balg.

L yann waam, lol ne n fiil. L sua g sijecien njann tie'n kadabig nne, k l tie g sua kan se'n. K n ji kal liig yen dɔlb gii kub kub g tan pund yenn buol nne g yidug be. B tua k «Alejo» bii be ?Jaa tin daan pend yaa daal nyan, l daan tie nyieεg i, k n g la. Tin pund l buol, lol n lebd mɔni, g yua kul ji njmin! K n kal g jiwaani kub'n. Lol n gii kub kub g daan naad g do jual. T daan gii pund naan g sijenm be, min den g njund n kadabig g njɔn, ban maad'n «Sabaa», k min gii leb. T tan pund Daapaaεonj, g yendu ji jii. Tin jiid g gaal t tied. Min baal n yie njaag lan daa lid'o yen min guan g kpen mɔla ne. Min Juab l kul g dugn'o g daan gbenn.

N yie, k «O !» K n nyie kuum fiel n, k n gii kun, min pad n yendu naatonpienn, k b daan bo bu kpi'n i !

K u daan bua n tuod g maad'n k n gii pund docienu n, k min daa nua yua k n g ban'o. N ji duan n yiε njaag i, k l fann k n tuod g pund n njaapo. N pund g bid togd, g paapaa kpen o ! N pal n, mii man ne i paapaa yul ne kpie kpinbobsiel n i siel buol!



N pund g kua g sua k n puo kal i, g kpiin ! G naayiga won baal g lod n naakpakuoli kul o. Mii n bu tɔgn lε g kpanyil nag i? Daa bii tuda nniin ne bu fid g daa l nai i? N mɔ nyuu yaa aa? Min gii tuad ! N nua naatitala g daan pund Kulyondl, lan ji bod. Min pɔn bad njaag yen tintonjena.

Bad n bual g laabaal i? Mii laabaal g be ! N daan gad dog i, g tan kpen g luol n nai. Bad g banjaa ? Mii, nai nle i. Wan maad'n g wonn i, k u naasenm won tan kpen yen nai nba ne k b won cend naayiga i, k b san g njaab. Bad n luod n naabi g te'n. Min nyan tudl g pi bad, g nyaan pig n nai g kun.

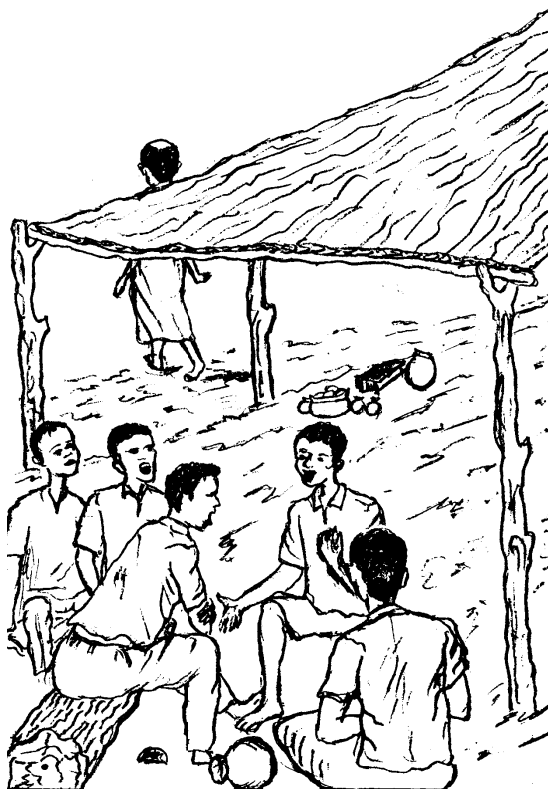


Min l pund ɲaag, g dii gbenn o ! Min tond ligli kul g gad g mag dikpalpiɛd ɲanle. Bɛ n biɛ tenn'n i? Min ji pol lann i, mii min kan ban g gad fagm g ɲaa n ɲaag yen n bid. N gii be n dog n g ko n kpaab n su. N tua n bo bu kpe n mankaal n ninɲ n nyan aa? N bona kul ń biɛl aa? N puo ń te pekual, n bid kpiebi waa? Bɛ manu po n be Lumi g g be t dog ne i? Lumi yaa binbenu n paa. Bonn kul yen tie yen ligli i!

N bid, yua kul ń nyuand tuonn n u dog n, g ɲaa wuwaapɔna-pɔna. A gii ɲaa wuwaad yen yukpientuonn, a bu fid a yul i. Min yaa po, wuwaadl mɔg tugbenɲl i, u g mɔg manfagl. Duud n yaan maad nnyan, wan kuol u disual g nyu, g tenn dibina g wul g nyaan fiil g ɲaa'b.

L youg, mɔniɛɔg ń ji tien b siign. Yenm yaann, g naayiga daan la g Duud tie nikipel g g mɔg paalu i, k b tien'o nnyan, k banm daa paa, k b bu yaad i. Lieb, k

wan g kua kalaatu g tie kpakuol i, k l tan tien'o nne, k lann kan fid g pan b mɔ yen ban yaad. Lieb mɔ, g ne g tie paalu yen kalaatu, lann i kaa ninfanm yal kaa. G baa a gii kua kalaatu, g yen g mɔg kadaad nba ɲɔɲ ɲan tie yua, g nyie naan, g Duud yubɔnn bu fid g baa a po. K a biɛ gii yaad, g g ban sua ɲan saa dog nba ninɲ, g Duud yaa yal bu fid gii su'a ! K fin mɔ i, fin nba cɔg kadaaɔg ne i, a la nle naasenm wuwaad po i?



Imprimeur :
Association des Traducteurs et Alphabétiseurs
pour la Promotion des Ecritures en Ben
B.P. 29 Dapaong, Togo
Numéro d'impression : 188
Nombre d'exemplaires : 500
Dépôt légal : 4e trimestre 2003

Prix : 175 francs cfa